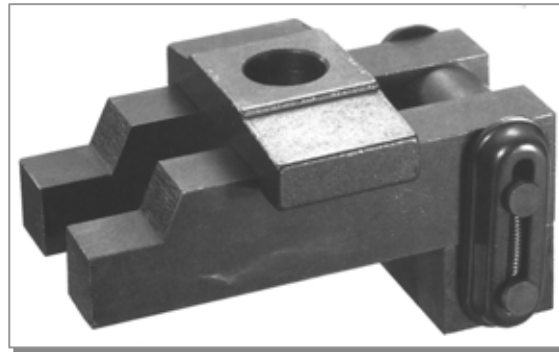


Mold Clamps “Easy Clamp”

(MATEX : JAPAN)

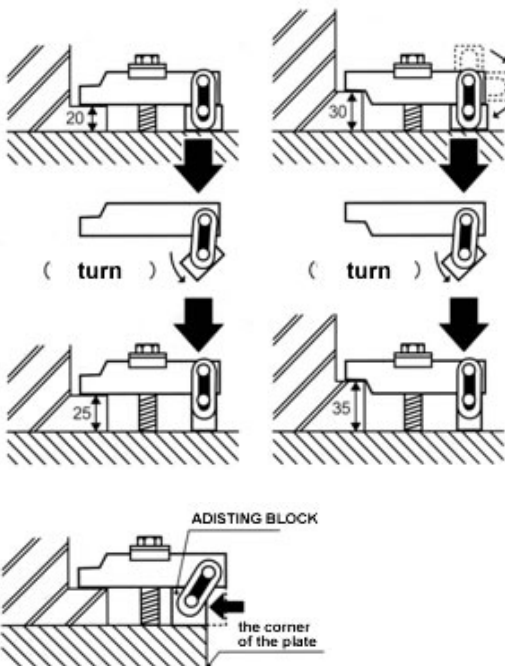


A single bolt can accommodate four different plate thicknesses, and the change of thicknesses are easy and quick.

Application Examples

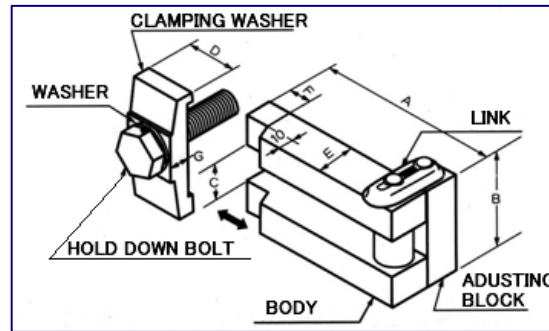
- Injection molding
- General pressing
- Die-casting

Application Examples



1. Body can be installed and removed just by turning bolts 0.5 to 1turn.
2. Mold plate thicknesses can be accommodated by quick, one-touch operation.
3. During attachment and detachment of dies (e.g. to replace die plates on horizontal molding machines), the clamping washers are vertically oriented at all times, which makes it easier to remove and insert the body from the side.
4. The block can be slid out to install Easy Clamp in case of little space for the die plate.

Dimensions



Specification

Size(mm)	Model	K	S	M	MA	MB	L	LA	EL
Hold down bolt		M10x65	M12x75	M16x90	M16x90	M16x90	M20x120	M20x130	M24x120
A		80	80	100	120	150	150	150	200
B		28.5	30.5	46.5	46.5	46.5	61	61	69
C		10.5	12.5	16.5	16.5	16.5	21	21	25
D		20	22	30	30	30	39	39	44
E		25	25	25	25	25	30	30	32
F		15	15	15	15	15	15	15	15
G		6	6	10.5	10.5	10.5	13	13	16
Adjusting block height		10x15	20x25	20x25	20x25	20x25	30x35	40x45	30x35
Thickness of washer		2	2.5	3	3	3	3	3	4
Mounting holes of clamped mold		10	12	16	16	16	20	20	24
Thickness of clamped mold		10, 15 20, 25	20, 25 30, 35	20, 25 30, 35	20, 25 30, 35	20, 25 30, 35	30, 35 40, 45	40, 45 50, 55	40, 45 50, 55
Package in each case		8pice	8pice	8pice	8pice	8pice	8pice	8pice	8pice

"Easy Clamp" must be used only for (mm) sized clamping plate,(see above table)

Easy Clamp Bolt

Model	K (SS)	S	M	MA	MB	L	LA	EL
Hold down bolt size(mm)	M10x65	M12x75	M16x90	M16x90	M16x90	M20x120	M20x130	M24x120

WARNING

The products described herein, including without limitation, ,product features, specifications, designs ,availability and pricing, are subject to change by JTD ENGINEERING,INC. at any time without notice.